

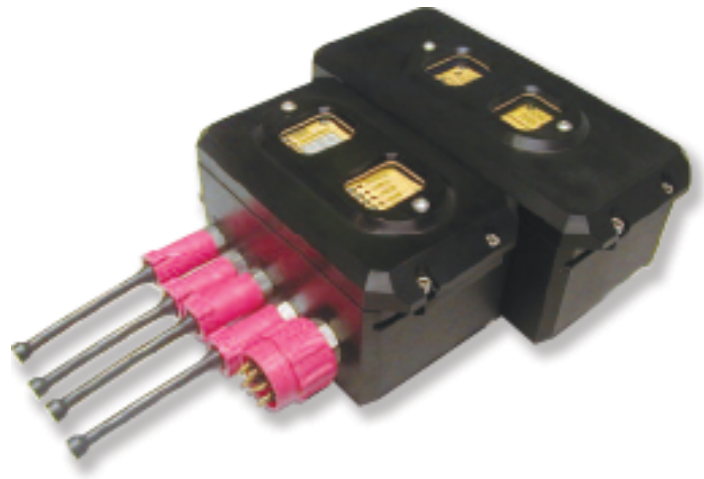
## iVP - Torque Tool Controller



### SUBSEA CONTROL SYSTEM PRODUCTS

### Key Features:

- Compact intelligent valve pack
- Cost effective field proven technology
- Hosts all standard smart torque tools
- Real-time torque & turns feedback
- 'Open loop' or 'Smart' failsafe modes
- Proportional pressure & flow control



### Product Overview:

The Torque Tool Controller, providing proportional high flow & pressure control, is a member of the iVP – intelligent valve pack family of products. Supplied in modular format, the system can be expanded in the future if required. The fully integrated subsea unit is supplied with a dedicated PC operating Fathom Systems Windows® based control software. The easy to use Graphical User Interface (GUI) guarantees that critical operations can be performed to the highest and safest levels.

The system can be interfaced with all standard API17D and Petrobras torque tools, with an automatic calibration using an RS232 output to the torque analyser. If the RS232 output is not available, the system can still be calibrated by manually inputting torque readings

## Standard System Set-up (Tool, Latches):

- NG6 Valve type WDPF-A06 x 1
- NG3 Valve type WDPF-A03 x 2
- Pressure Control Valve type TS-1036
- High Flow Pressure Relief Valves
- Upstream, Downstream & Depth Pressure TXD's

## Optional System Set-up (Tool, Latches, Flot):

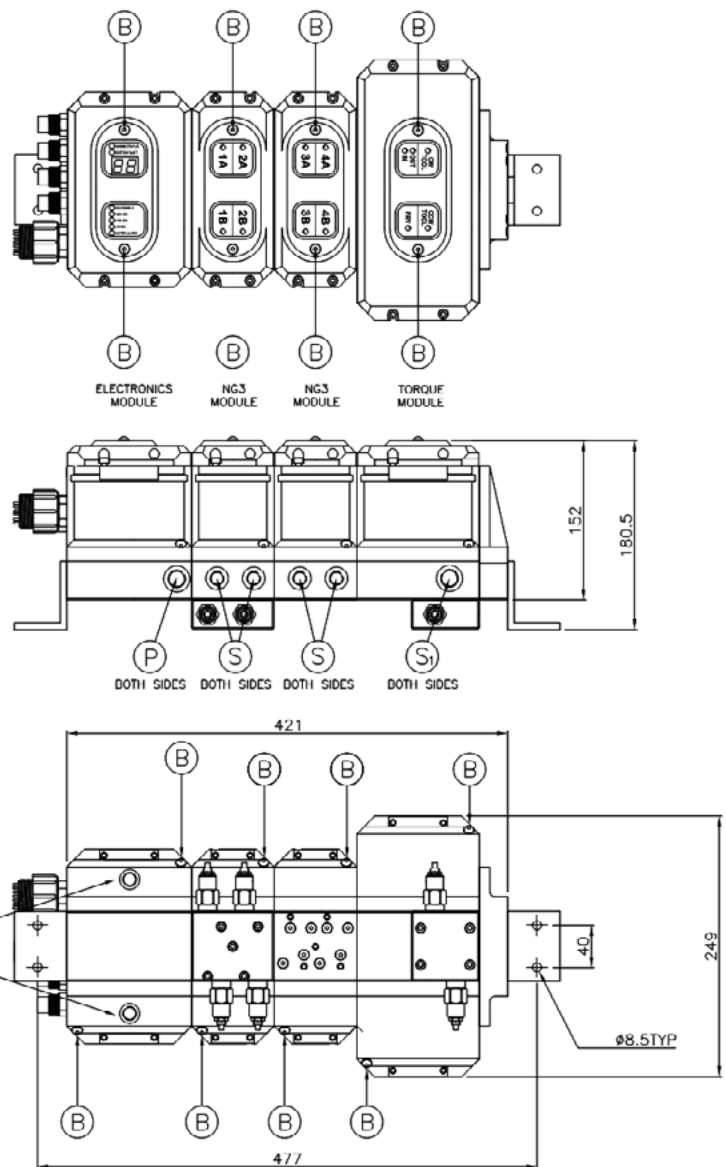
- NG3 Valve type WDPF-A03 x 2
- PO Check Valve type BDERV3 x 2

## Performance:

- Electronic 100Hz Loop Control
- Hydraulic Working Pressure: 207 bar (max)
- Torque Tool Flow: 0-24 lpm (cw & ccw)

## Mechanical:

- Depth Rating: 3000msw
- Pressure & Tank: 3/8" BSPP
- NG6 Valve, Fill & Drain: 3/8" BSPP
- NG3 Valve: 1/4" BSPP
- Material: 6082T6 Al Hard Anodised to BS5599, Dyed Black & Dichromate Sealed to 50 Microns
- Weight in Air: 19 kg
- Weight in Water: 12.5 kg



[CLICK HERE FOR FURTHER SPECIFICATION ONLINE](#)